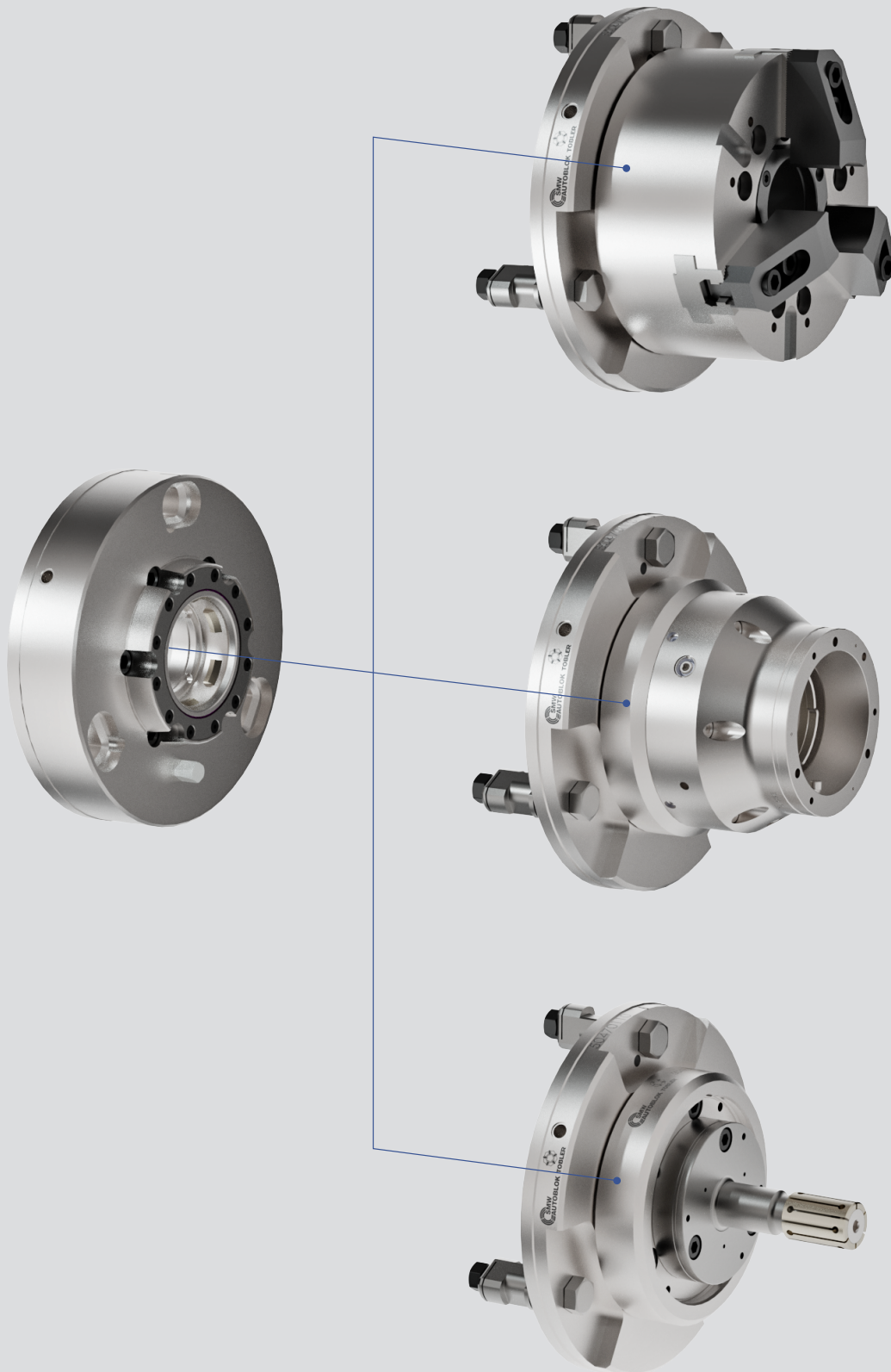


# TMS-2G



**Universal Quick Change Workholding  
System For Turning CNC Machines**





- Highest repeatability and change over accuracy
- Central actuation for locking and unlocking
- Large through-hole



### Application/customers benefits

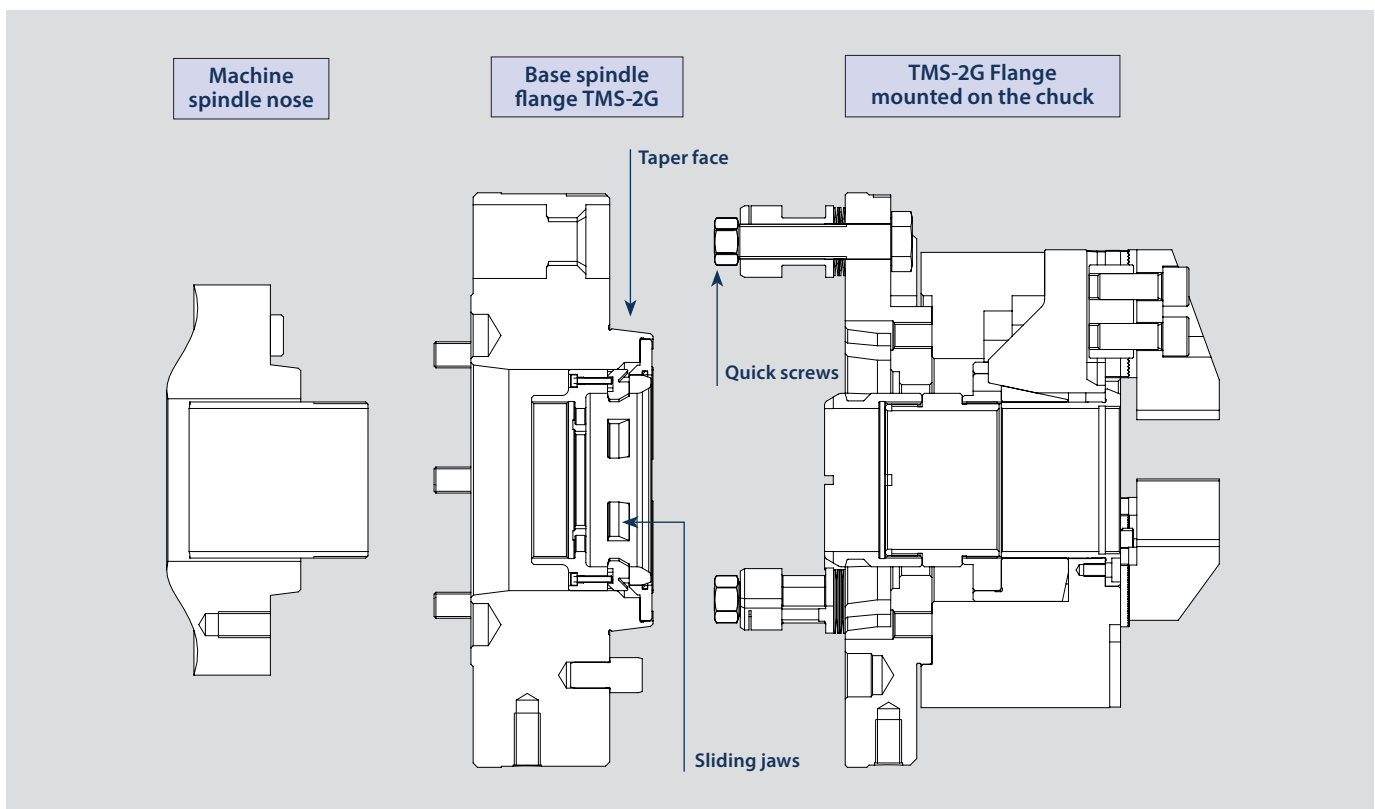
- Very simple system for quick change chucks less than 1 mn
- Quick change over of workholding on CNC machines
- Less down time and high changing accuracy
- Available for any ASA spindle turning machine
- Available for any clamping device (automatic or manual clamping)
- Easy to load and unload (no rotation needed)
- Delivered with lifting ring and manual key safety lock

### Technical features

- Highest repeatability and change over accuracy less than 7  $\mu$
- Central actuation for locking and unlocking.
- Very large through hole
- Protection against contamination

## Function

Only one base TMS-2G spindle flange is mounted on your spindle nose

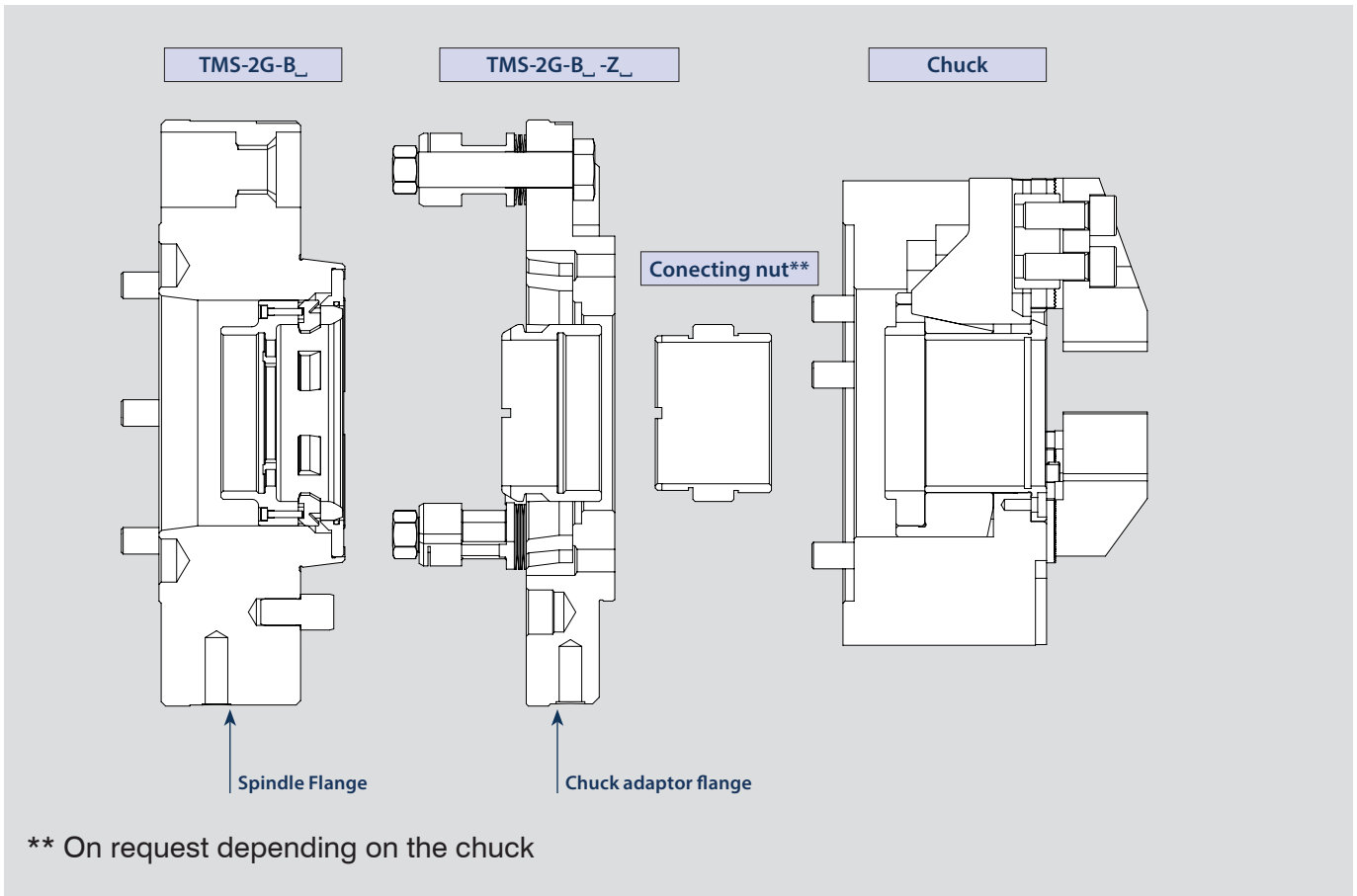


**Several TMS-2G flanges (one for each chuck) could be used. The chuck is mounted on its TMS-2G Flange out of the machine**

### Procedure for the quick change

- Connexion between Spindle flange and chuck flange by a taper-face and a set of quick screws (repeatability < 7  $\mu$ )
- Actuation for clamping is made by an internal patented sliding jaws system with large thru-hole

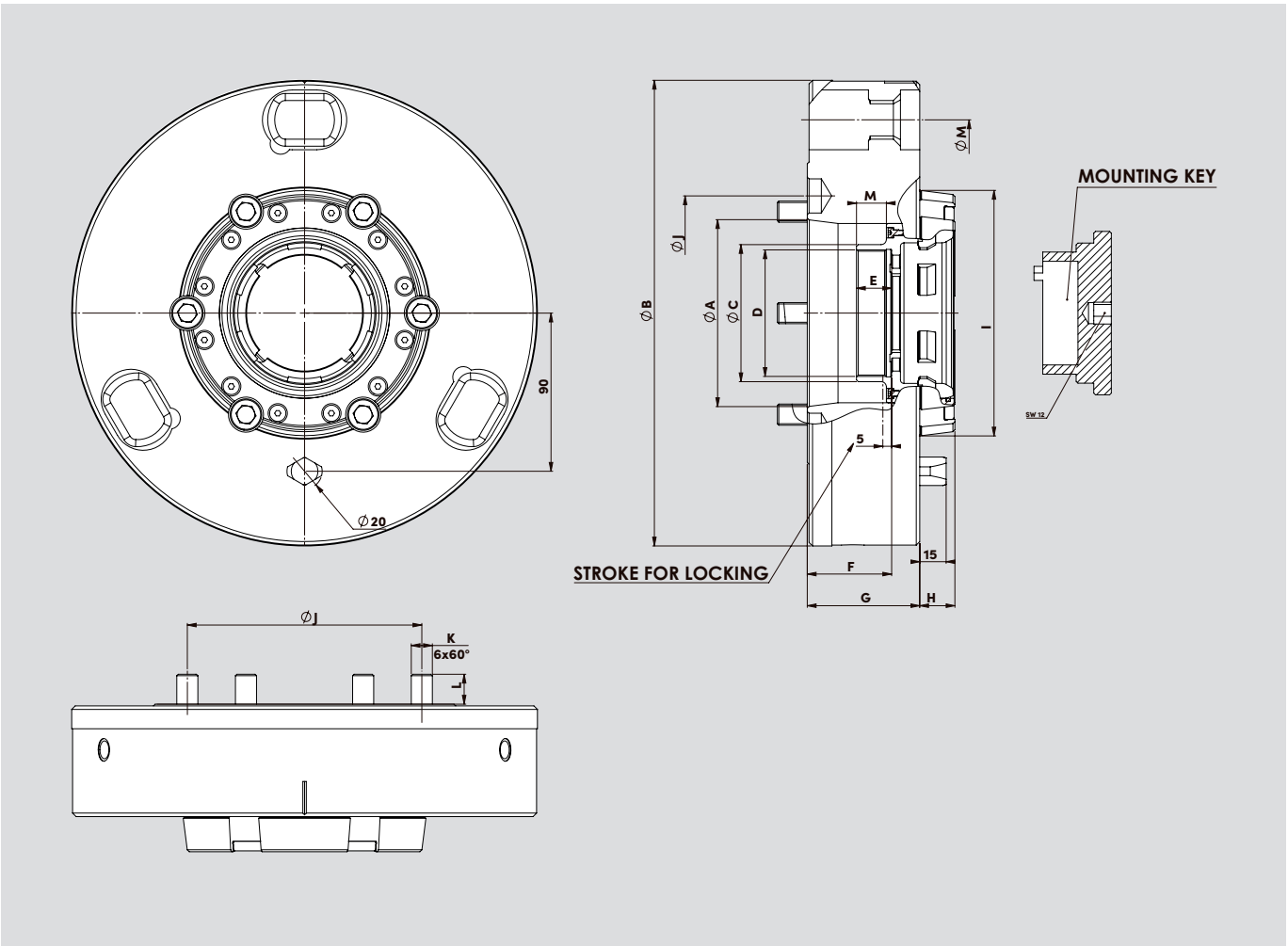
# ORDERING OVERVIEW



SPINDLE FLANGE	
TMS-2G-B_	
5	For spindle A2-5
6	For spindle A2-6
8	For spindle A2-8

CHUCK ADAPTOR FLANGE	
TMS-2G-B_ -Z_	Centering Ø of chuck
5	For spindle A2-5
6	For spindle A2-6
8	For spindle A2-8

On request : other spindle nose (ASA11"-15"), inside coolant and airsensing

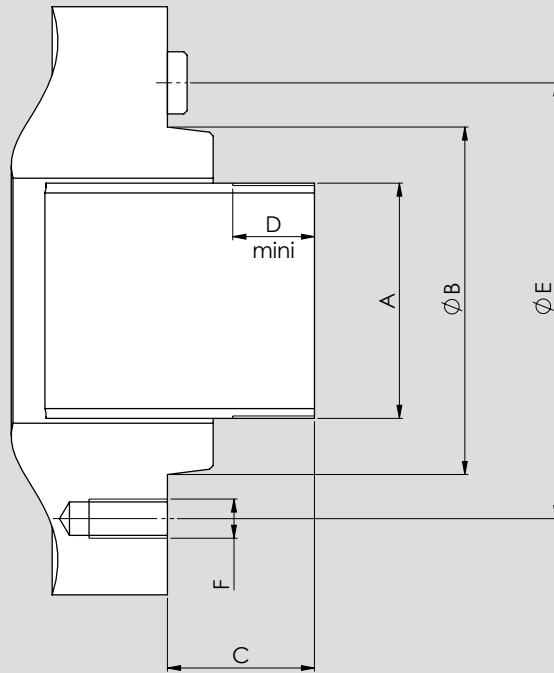


SMW AUTOBLOK Type	TMS-2G-B5	TMS-2G-B6	TMS-2G-B8
<b>Id. N°</b>	<b>50470000</b>	<b>50470070</b>	<b>50470130</b>
A	82,563	106,375	139,719
B	210	265	280
C	60	78	96
D	M55x1.5	M72x1.5	M90x2
E	20	20	20
F	44	48	48
G	60	64	64
H	20	20	20
I	120	139,719	154
J	104 ,8	133,4	171,4
K	M10	M12	M16
L	15	17	23
M	17	17	17
Maxi pull force (KN)	50	70	90
Moment of inertia (Kg/m²)	0,05	0,1	0,15
Weight (Kg)	14	24	27
Max, speed (rpm)	6000	6000	6000

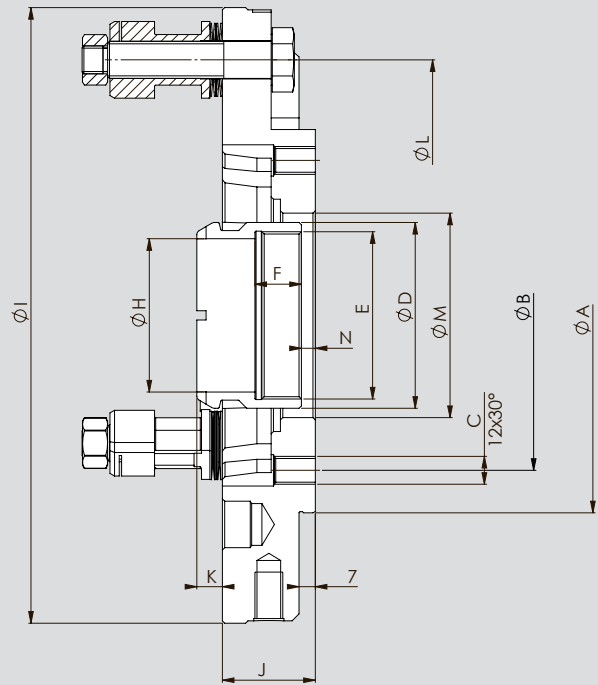
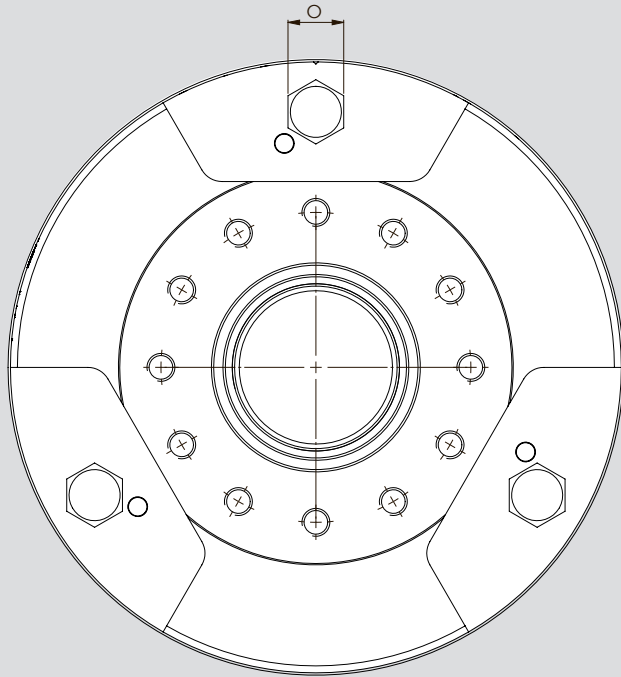


the described design is for draw tube with O.D thread only  
For draw bar with I.D. thread please ontact SMW-AUTOBLOK-TOBLER

## COMPLETE FORWARD END POSITION



SMW AUTOBLOK Type	TMS-2G-B5	TMS-2G-B6	TMS-2G-B8
SPINDLE NOSE	A2-5	A2-6	A2-8
A	M55x1.5	M72x1.5	M90x2
B	82,563	106,375	139,719
C	44	48	48
D	23	23	23
E	104.8	133.4	171.4
F	M10	M12	M16

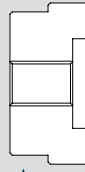
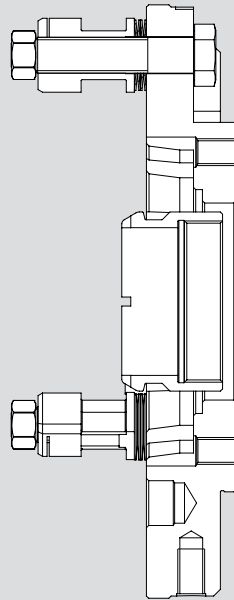
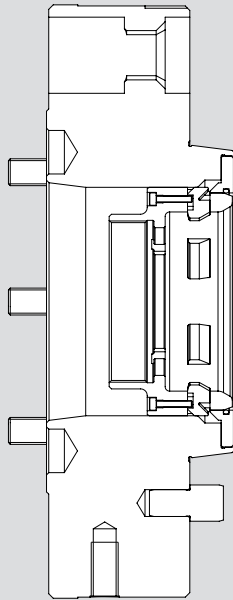


Spindle flange	Chuck adaptor flange	Id. N°	A	B	C	D	E	F	H	I	J	K	L	M	N	O
<b>TMS-2G-B5</b>	TMS-2G-B5-Z115	50470010	115	82,6	M10	57	M49x2	20	43	210	40	11	175	58	6	19
	TMS-2G-B5-Z120	50470020	120	104,8	M10	57	M49x2	20	43	210	40	11	175	58	6	19
	TMS-2G-B5-Z130	50470030	130	104,8	M10	57	M49x2	20	43	210	40	11	175	58	6	19
	TMS-2G-B5-Z140	50470040	140	104,8	M10	57	M49x2	20	43	210	40	11	175	58	6	19
	TMS-2G-B5-Z160	50470050	160	133,4	M12	57	M49x2	20	43	210	40	11	175	58	6	19
	TMS-2G-B5-Z170	50470060	170	133,4	M12	57	M49x2	20	43	210	40	11	175	58	6	19
<b>TMS-2G-B6</b>	TMS-2G-B6-Z130	50470080	130	104,8	M10	80	M72x2	20	66	265	40	11	220	88	6	24
	TMS-2G-B6-Z140	50470090	140	104,8	M10	80	M72x2	20	66	265	40	11	220	88	6	24
	TMS-2G-B6-Z160	50470100	160	133,4	M12	80	M72x2	20	66	265	40	11	220	88	6	24
	TMS-2G-B6-Z170	50470110	170	133,4	M12	80	M72x2	20	66	265	40	11	220	88	6	24
	TMS-2G-B6-Z220	50470120	220	171,4	M16	80	M72x2	20	66	265	40	11	220	88	6	24
<b>TMS-2G-B8</b>	TMS-2G-B8-Z160	50470140	160	133,4	M12	96	M88x2	20	82	280	40	11	235	100	6	24
	TMS-2G-B8-Z170	50470150	170	133,4	M12	96	M88x2	20	82	280	40	11	235	100	6	24
	TMS-2G-B8-Z220	50470160	220	171,4	M16	96	M88x2	20	82	280	40	11	235	100	6	24
	TMS-2G-B8-Z280	50470170	280	235	M20	96	M88x2	20	82	280	57	11	235	145	23	24
	TMS-2G-B8-Z300	50470180	300	235	M20	96	M88x2	20	82	300	57	11	235	145	23	24



TMS-2G-B5  
TMS-2G-B6  
TMS-2G-B8

TMS-2G-B5-Z170  
TMS-2G-B6-Z170  
TMS-2G-B8-Z170

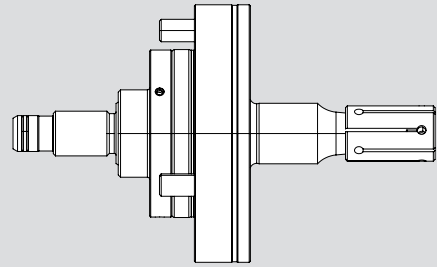


\*\*Connecting nut

Mandrel adaptor flange

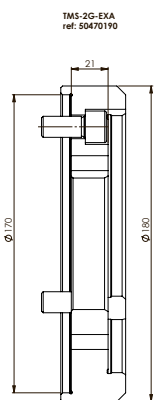


Mandrel



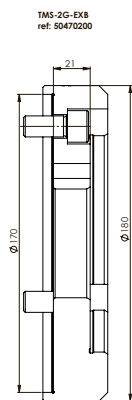
\*\* On request depending on the mandrel

## Mandrel ADAPTOR FLANGE



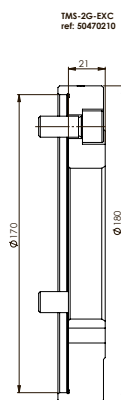
TMS-2G-EXA  
ref: 50470190

- EMX-C-1
- EMX-C-2
- EMX-C-3
- EMX-C-4
- EMX-F/FP-1
- EMX-F/FP-2
- EMX-F/FP-3
- EMX-F/FP-4
- EMXP-1
- EMXP-10
- EMXP-11
- EMXP-2
- EMXP-3
- EMXP-4
- EMXP-5
- EMXP-6
- EMXP-7
- EMXP-8
- EMXP-9



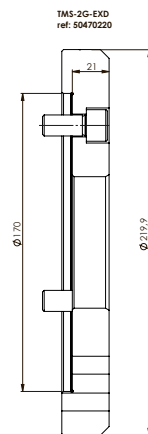
TMS-2G-EXB  
ref: 50470200

- EM-A-1
- EM-A-2
- EM-A-3
- EM-A-4
- EM-A-5
- EM-A-6
- EM-B 1
- EM-B 2
- EM-B 3
- EMX-S-1
- EMX-S-2
- EMX-S-3
- EMX-S-4



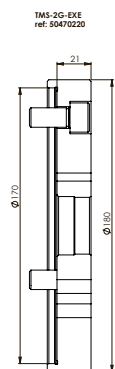
TMS-2G-EXC  
ref: 50470210

- EM-A-10
- EM-A-11
- EM-A-7
- EM-A-8
- EM-A-9



TMS-2G-EXD  
ref: 50470220

- EMX-C-5
- EMX-F/FP-5
- EMX-F/FP-6
- EM-B-4



TMS-2G-EXE  
ref: 50470230

- TMTP
- TMDI
- TMTPN
- TMIT





Area with horizontal lines for notes.

TOBLER, a french manufacturer founded in 1945 with its production plant near Paris Airport, has just joined SMW-Autoblok Group, the worldwide leader in industrial workholding solutions.



SMW-Autoblok France Headquarter, Lyon France  
Development, Sales, Service, Support



TOBLER manufacturing plant, Paris France



Sales and Export department



Technical office for development and applications



Tobler Manufacturing plant

Feel free to join us on our website: [www.tobler-workholding.com](http://www.tobler-workholding.com)



## MAIN OUR CATALOGS



All SMW-Autoblok  
official videos:



## SOME OF OUR VIDEOS



QUICK  
CHANGE JAWS  
KIT-RR



KNCS-2G



APS



TWIN VISE



AUTOMATION



SMW-electronics  
MotionAct -  
360°rotation



SMW-AUTOBLOK TOBLER  
17, Avenue des Frères Montgolfier - Z.I Mi-Plaine  
F-69680 Chassieu, FRANCE  
Tel. +33 (0) 472791818  
Fax +33 (0) 472791819  
E-mail: autoblok@smwautoblok.fr



SMW-AUTOBLOK Corporation  
285 Egidi Drive - Wheeling, IL 60090 USA  
Tel. +1 847 - 215 - 0591  
Fax +1 847 - 215 - 0594  
E-mail: autoblok@smwautoblok.com



SMW-AUTOBLOK Japan Inc.  
1-56 Hira, Nishi-Ku, JAPAN  
461-Nagoya  
Tel. +81 (0) 52 - 504 - 0203  
Fax +81 (0) 52 - 504 - 0205  
E-mail: japan@smwautoblok.co.jp



SMW-AUTOBLOK (Shanghai) Work Holding Co., Ltd.  
Building 6, No.72, JinWen Road, KongGang  
Industrial Zone, ZhuQiao Town, Pudong District  
201323, Shanghai P.R. China  
Tel. +86 21 - 5810 - 6396  
Fax +86 21 - 5810 - 6395  
E-mail: china@smwautoblok.cn



SMW-AUTOBLOK Mexico, S.A. de C.V.  
Acceso III No. 16 Int.9  
Condominio Quadrum  
Industrial Benito Juarez  
Querétaro, Qro. C.P. 76130  
Tel. +52 (442) 209 - 5118  
Fax +52 (442) 209 - 5121  
E-mail: smwmex@smwautoblok.mx



SMW-AUTOBLOK Workholding Pvt. Ltd.,  
Plot No. 4, Weikfield Industrial Estate,  
Gat No. 1251, Sanaswadi, Tal – Shirur, INDIA  
Dist – Pune. 412 208  
Tel. +91 2137 - 616 974  
Fax +91 2137 - 616 972  
E-mail: info@smwautoblok.in



SMW-AUTOBLOK MAKİNA SAN. VE TİC. LTD. ŞTİ.  
Yenişehir Mah, Osmanlı Blv, TURKEY  
Volume Kurtköy Ofis, No: 9, Kat: 1,  
D: 4, PK: 34912, Pendik, İstanbul  
Tel. +90216629 - 2019  
E-mail: info@smwautoblok.com.tr



SMW-AUTOBLOK Scetina AB  
Kasernvägen 2  
SE - 281 35 Hässleholm  
Tel. +46 (0) 761 420 111  
E-mail: info@smw-autoblok.se



AUTOBLOK s.p.a.  
Via Duca D'Aosta n.24  
Fraz. Novaretto  
I-10040 Caprie - Torino  
Tel. +39 011 - 9638411  
Tel. +39 011 - 9632020  
Fax +39 011 - 9632288  
E-mail: info@smwautoblok.it



SMW-AUTOBLOK Spannsysteme GmbH  
Postfach 1151 • D-88070 Meckenbeuren  
Wiesentalstraße 28 • D-88074 Meckenbeuren  
Tel. +49 (0) 7542 - 405 - 0  
Vertrieb Inlet : Fax +49 (0) 7542-3886  
E-mail vertrieb@smw-autoblok.de  
Sales International : Fax: +49 (0) 7542 - 405 - 181  
E-mail : sales@smw-autoblok.de



SMW-AUTOBLOK Telbrook Ltd.  
7 Wilford Industrial Estate  
Ruddington Lane, Wilford  
GB-Nottingham, NG11 7EP  
Tel. +44 (0) 115 - 982 1133  
E-mail: info@smw-autoblok-telbrook.co.uk



SMW-AUTOBLOK IBERICA, S.L.  
Ursalto 4 – Pab. 9-10 Pol. 27  
20014 Donostia - San Sebastián (Gipuzkoa)  
Tel. : +34 943 - 225 079  
Fax: +34 943 - 225 074  
E-mail: info@smwautoblok.es



AUTOBLOK s.p.a. Uff. Rappr.  
B.Tulskaya str., 10, bld.3, off. 323,  
115191 Moscow, RUSSIA  
Tel. +7 495 -231-1011  
Fax +7 495 -231-1011  
E-mail: info@smw-autoblok.ru



AUTOBLOK Company Ltd.  
NO.6, SHUYI RD., SOUTH DIST.,  
TAICHUNG, TAIWAN  
Tel. +886 4-226 10826  
Fax +886 4-226 12109  
E-mail: taiwan@smwautoblok.tw



SMW-AUTOBLOK s.r.o.  
Merhautova 20  
CZ - 613 00 BRNO  
Tel. +420 513 034 157  
Fax +420 513 034 158  
E-mail: info@smw-autoblok.cz



SMW-AUTOBLOK Polet SP. Z O.O  
Ligocka 103 - Building 8  
40-568 Katowice, POLET  
Tel. +48 (0) 664 673 428  
E-mail: info@smwautoblok.pl



SMW-AUTOBLOK KOREA CO., LTD.  
1108 ho, Baeksang Startower 1st,  
65, Digital-ro 9-gil, Geumcheon-gu  
Seoul, ROK-08511, KOREA  
Tel. +82 2 6267 9505  
Fax +82 2 6267 9507  
E-mail: info-korea@smw-autoblok.net